

## CERTIFICATE OF ANALYSIS

<b>SAMPLE</b>	Essential Oil of <i>Leptospermum petersonii</i>
<b>CUSTOMER</b>	Projects Etc Pty (Japan)
<b>CERTIFICATION DATE</b>	15 June 2017
<b>CUSTOMER LOT/BATCH No.</b>	LTT2017
<b>LABORATORY REF.</b>	ARL172700
<b>JOB No.</b>	A171056

TEST	RESULTS	TEST METHOD
	Area %	
$\alpha$ -pinene	0.33	ARL-TM101-3*
$\beta$ -pinene	0.10	
myrcene	1.34	
limonene	0.39	
p-cymene	0.07	
1,8 cineole	0.12	
$\gamma$ -terpinene	0.01	
linalool	2.34	
pulegol	2.38	
citronellal	15.62	
isoulegol	1.26	
(cis)- iso-citral	0.83	
(trans)- iso-citral	1.67	
citronellol	1.81	
nerol	0.52	
geraniol	2.19	
neral	26.13	
geranial	34.14	
citronellyl acetate	0.17	
bicyclogermacrene	0.99	

\* Assay by GC (FID detection – area percent report) with GCMS confirmation.

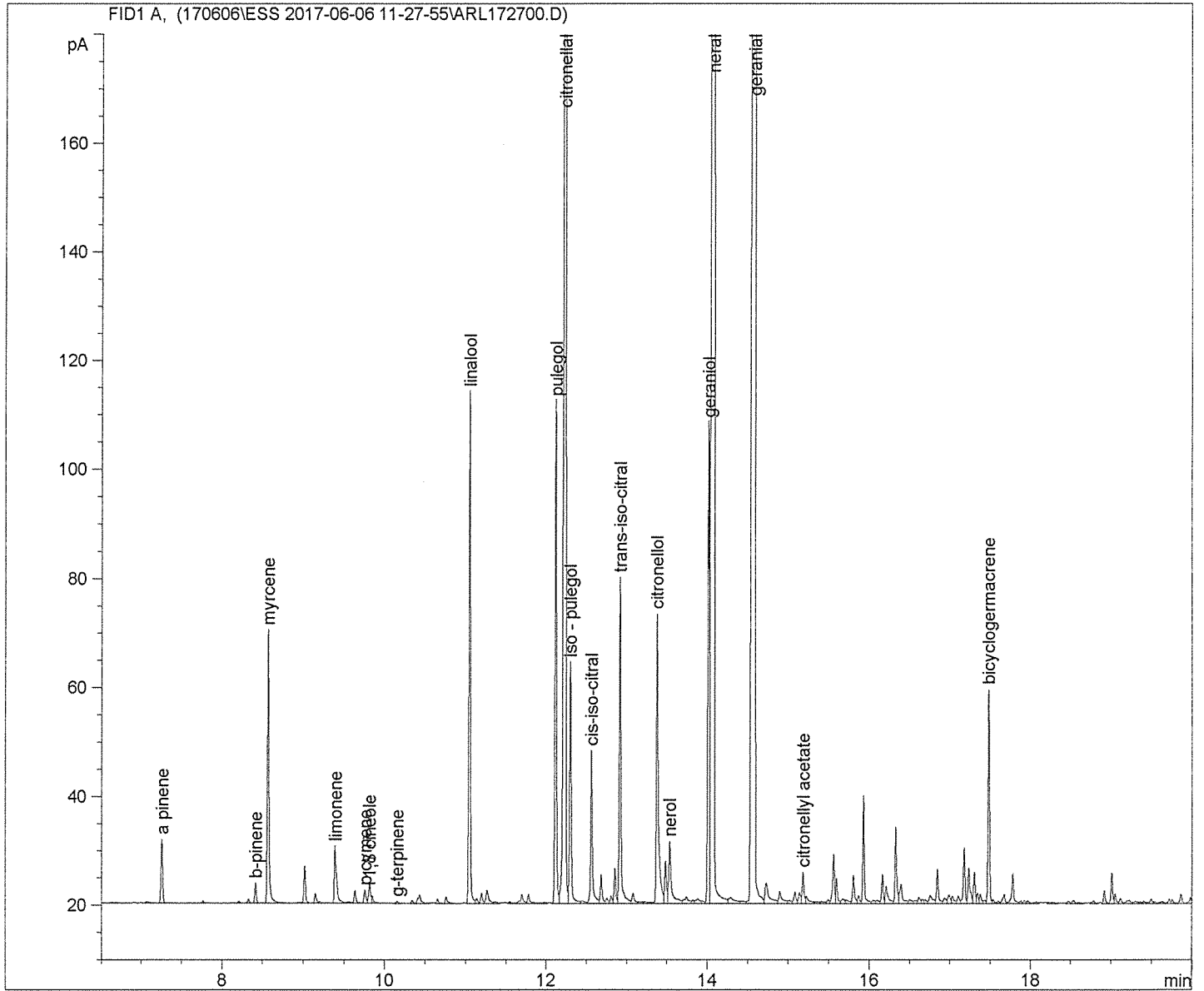
  
 .....  
**MS SAMANTHA MORROW**  
**ANALYTICAL OFFICER**

  
 .....  
**MR ASHLEY DOWELL**  
**MANAGER - ARL**

Sample Name: L.PETERSONII LTT2017

```
=====
Acq. Operator   : SM BB                      Seq. Line :    4
Acq. Instrument : GC-3                      Location  : Vial 5
Injection Date  : 6/6/2017 1:58:57 PM       Inj       :    1
                                                Inj Volume: 1 µl

Acq. Method     : D:\GC-3_DATA\DATA\170606\ESS 2017-06-06 11-27-55\LPET.M
Last changed    : 5/11/2017 1:40:29 PM by SM BB
Analysis Method : D:\GC-3_DATA\METHODS\LPET.M
Last changed    : 6/9/2017 11:31:44 AM by SM BB
                  (modified after loading)
Method Info     : Method to analyse essential oils
=====
```



Sample Name: L.PETERSONII LTT2017

=====  
Area Percent Report  
=====

Sorted By : Signal  
Calib. Data Modified : Friday, June 09, 2017 11:28:59 AM  
Multiplier : 1.0000  
Dilution : 1.0000  
Use Multiplier & Dilution Factor with ISTDs

Signal 1: FID1 A,

Peak #	RetTime [min]	Type	Width [min]	Area [pA*s]	Area %	Name
1	7.260	VB	0.0225	17.17386	0.33080	a pinene
2	8.419	VB	0.0220	5.21700	0.10049	b-pinene
3	8.572	VV	0.0212	69.63445	1.34129	myrcene
4	9.393	VV	0.0277	20.49880	0.39485	limonene
5	9.759	VV	0.0243	3.80703	0.07333	p cymene
6	9.814	VV	0.0243	6.00669	0.11570	1,8 cineole
7	10.159	VB	0.0230	5.31263e-1	0.01023	g-terpinene
8	11.052	VV	0.0200	121.22964	2.33511	linalool
9	12.122	VV	0.0211	123.48517	2.37855	pulegol
10	12.237	VV	0.0224	810.94232	15.62025	citronellal
11	12.305	VV	0.0227	65.41051	1.25993	iso - pulegol
12	12.566	VV	0.0229	43.25412	0.83315	cis-iso-citral
13	12.920	VV	0.0218	86.53983	1.66692	trans-iso-citral
14	13.381	VV	0.0260	93.88706	1.80844	citronellol
15	13.540	VV	0.0335	26.98951	0.51987	nerol
16	14.018	VV	0.0200	113.61929	2.18852	geraniol
17	14.081	VV	0.0319	1356.60291	26.13069	neral
18	14.587	VV	0.0292	1772.62671	34.14408	geranial
19	15.186	VV	0.0238	9.05799	0.17447	citronellyl acetate
20	17.482	VV	0.0208	51.59391	0.99379	bicyclogermacrene

Totals : 4798.10805 92.4205

=====  
\*\*\* End of Report \*\*\*