

CERTIFICATE OF ANALYSIS

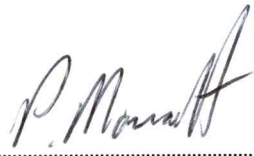
SAMPLE NAME	Oil of Eucalyptus polybractea		
FORM	Oil		
CUSTOMER NAME	Projects Etc Pty (Japan)		
CERTIFICATION DATE	30 January 2020		
CUSTOMER REFERENCE	BM19		
ARL JOB #	A200066	LAB REF. #	ARL2000109
ANALYSIS	GCFID - Area%		

TEST	RESULTS	TEST METHOD
	Area %	
α-pinene	1.36	ARL-TM101-4*
sabinene	0.31	
β-pinene	0.91	
myrcene	0.53	
α-phellandrene	0.54	
α-terpinene	0.15	
limonene	1.95	
β-phellandrene	2.65	
p-cymene	3.54	
1,8 cineole	80.16	
γ-terpinene	0.31	
trans pinocarveol	0.21	
terpinen-4-ol	1.20	
α-terpineol	0.60	
cryptone	0.63	
myrtenal	0.11	
cuminaldehyde	0.42	
terpinyl acetate	0.50	

* Assay by GC (FID detection –area percent report) with GCMS confirmation



 Dr Jeanette Balindong
ANALYTICAL OFFICER

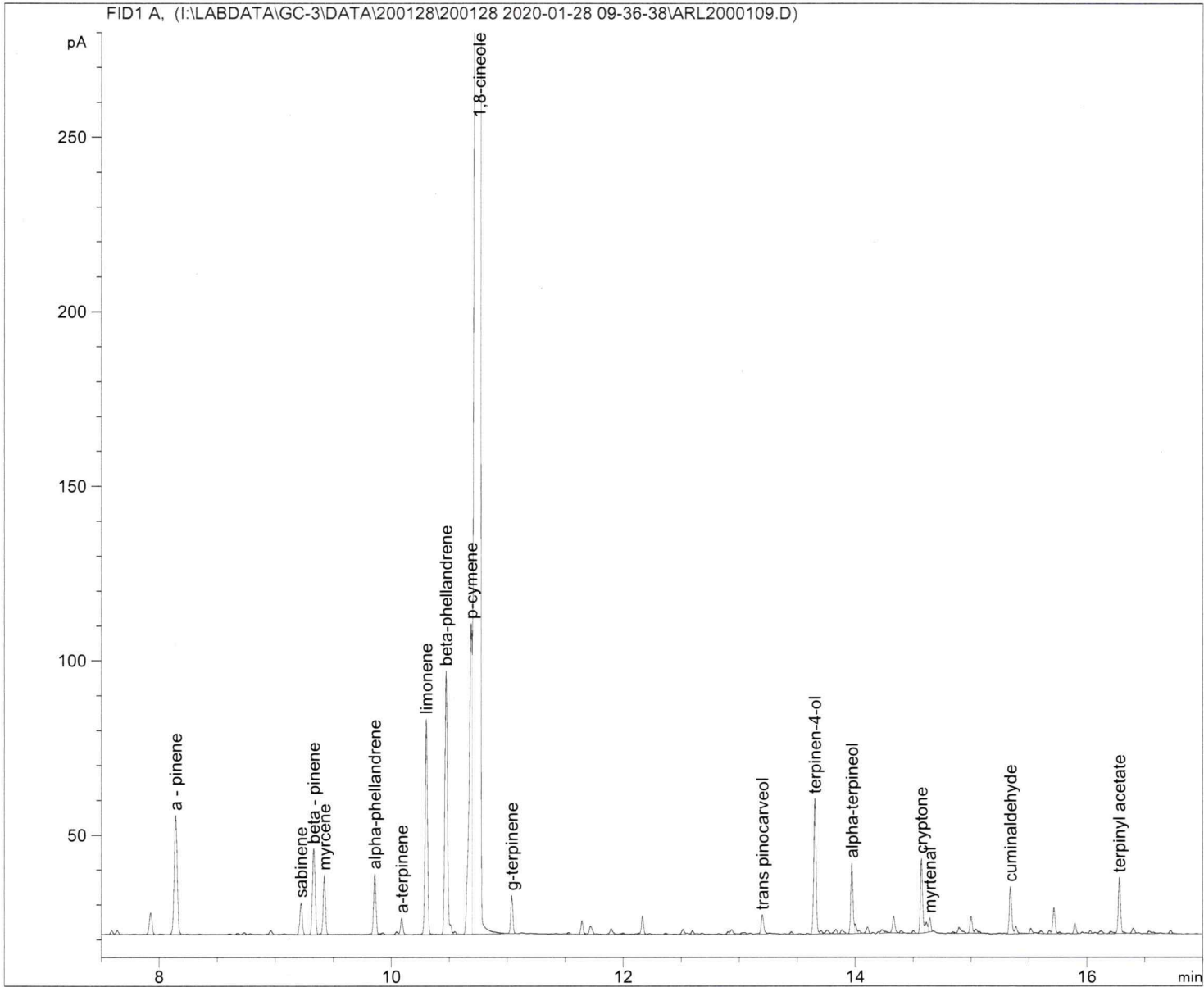


 Mr Ashley Dowell
MANAGER - ARL

=====

Acq. Operator	: RB	Seq. Line	: 18
Acq. Instrument	: GC-3	Location	: Vial 20
Injection Date	: 29/01/2020 11:52:05 AM	Inj	: 1
		Inj Volume	: 1.000 µl

Acq. Method : Y:\DATA\200128\200128 2020-01-28 09-36-38\EUC POLYB.M
Last changed : 7/01/2020 4:24:24 PM by AW
Analysis Method : I:\LABDATA\GC-3\METHODS\EUC POLYB.M
Last changed : 30/01/2020 10:11:00 AM
(modified after loading)
Method Info : Method to analyse essential oils



=====
Area Percent Report
=====

Sorted By	:	Signal
Calib. Data Modified	:	30/01/2020 10:00:25 AM
Multiplier	:	1.0000
Dilution	:	1.0000

Use Multiplier & Dilution Factor with ISTDs

gLB
30/1/20

Signal 1: FID1 A,

Peak #	RetTime [min]	Type	Width [min]	Area [pA*s]	Area %	Name
1	8.144	BV	0.0272	61.39607	1.3608	a - pinene
2	9.224	BB	0.0234	13.77385	0.3053	sabinene
3	9.333	BV	0.0261	40.84086	0.9052	beta - pinene
4	9.425	VB	0.0223	23.77539	0.5270	myrcene
5	9.859	VV	0.0212	24.55668	0.5443	alpha-phellandrene
6	10.091	VB	0.0213	6.84103	0.1516	a-terpinene
7	10.302	VV	0.0224	88.03802	1.9513	limonene
8	10.474	BV	0.0247	119.38525	2.6461	beta-phellandrene
9	10.692	BV	0.0262	159.69919	3.5397	p-cymene
10	10.762	VV	0.0299	3616.42505	80.1568	1,8-cineole
11	11.041	BB	0.0203	14.13186	0.3132	g-terpinene
12	13.199	BV	0.0248	9.30176	0.2062	trans pinocarveol
13	13.654	BV	0.0213	54.31264	1.2038	terpinen-4-ol
14	13.972	BV	0.0207	27.27950	0.6046	alpha-terpineol
15	14.573	BV	0.0207	28.42531	0.6300	cryptone
16	14.645	VB	0.0205	5.18584	0.1149	myrtenal
17	15.339	BV	0.0221	18.92382	0.4194	cuminaldehyde
18	16.279	VB	0.0217	22.36702	0.4958	terpinyl acetate

Totals : 4334.65913 96.0762

=====
*** End of Report ***

643
30/1/20